

MONITOR 1,000,000 INTERFACES or 50,000 devices with OpManager



SCALE AS YOUR IT GROWS without
adding any additional polling engines



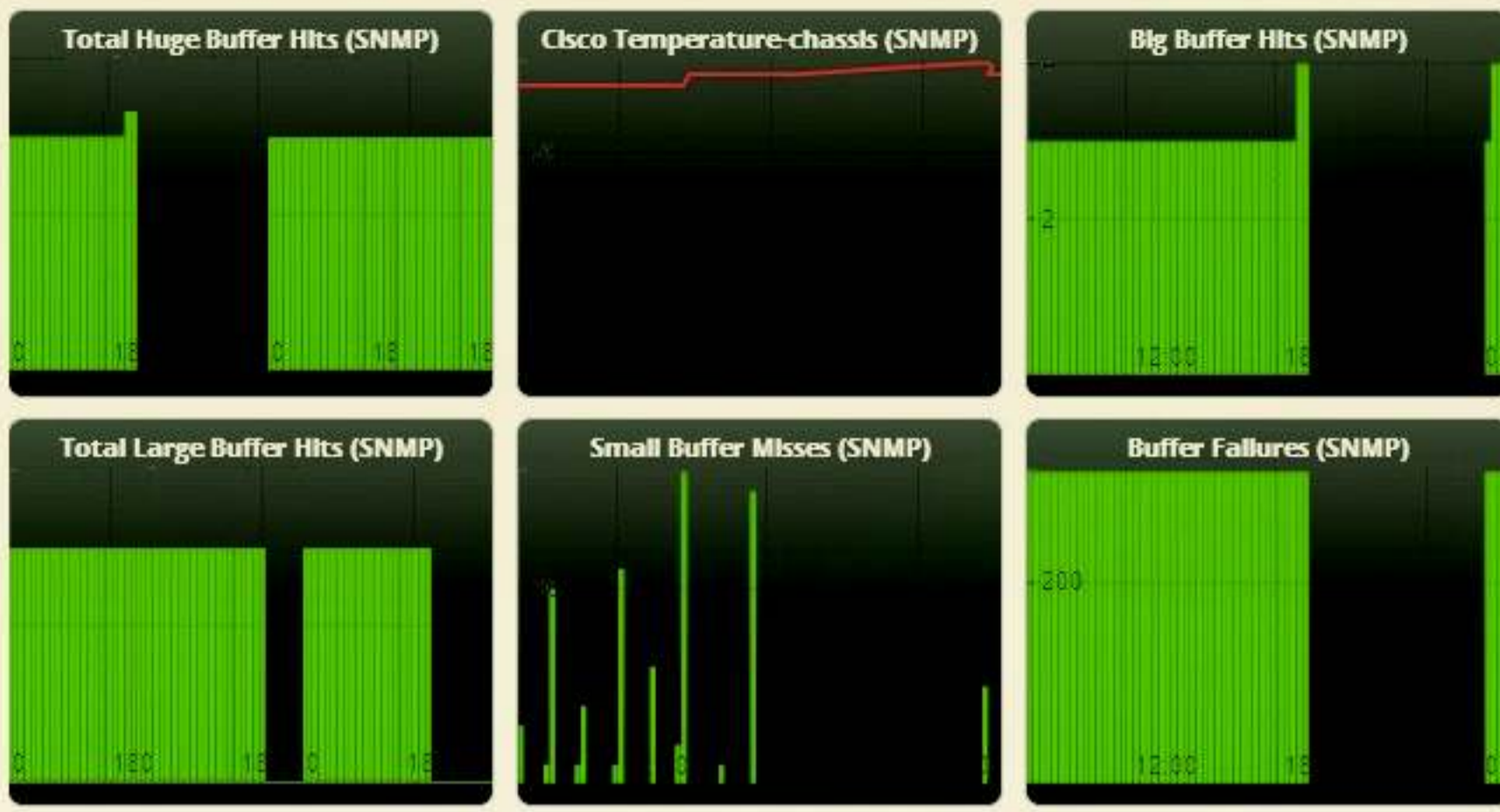
- Network Performance Monitoring
- Network Configuration Management
- Network Traffic Analysis
- Network Mapping
- Server Performance Monitoring
- Applications Monitoring

- Fault Management
- IT Workflow Automation
- 3D Datacenter Builder
- IP Address Management
- Performance Reporting
- Integration with third party tools



WWW.OPMANAGER.COM

All the features you need in a single platter

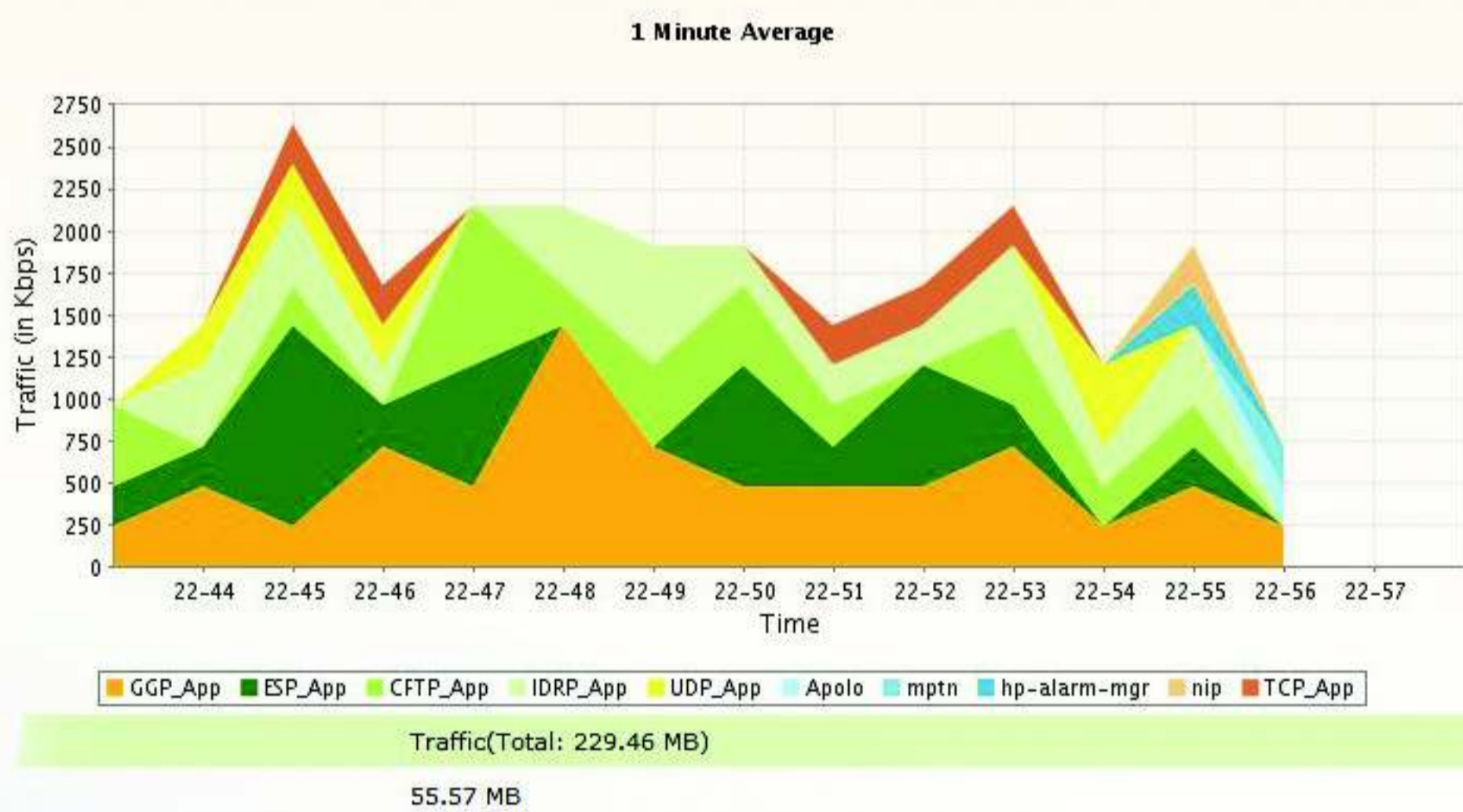


Network Performance Monitoring

- Monitor availability and performance of network devices
- Monitor interface/ port traffic via SNMP
- Manage VoIP and WAN links via Cisco IP SLA
- Identify and resolve network outages quickly

Network Configuration Management

- Automate policy-based change, configuration and compliance on your network devices
- Schedule configuration backups
- Detect configuration changes in real-time
- Assure security for every configuration change

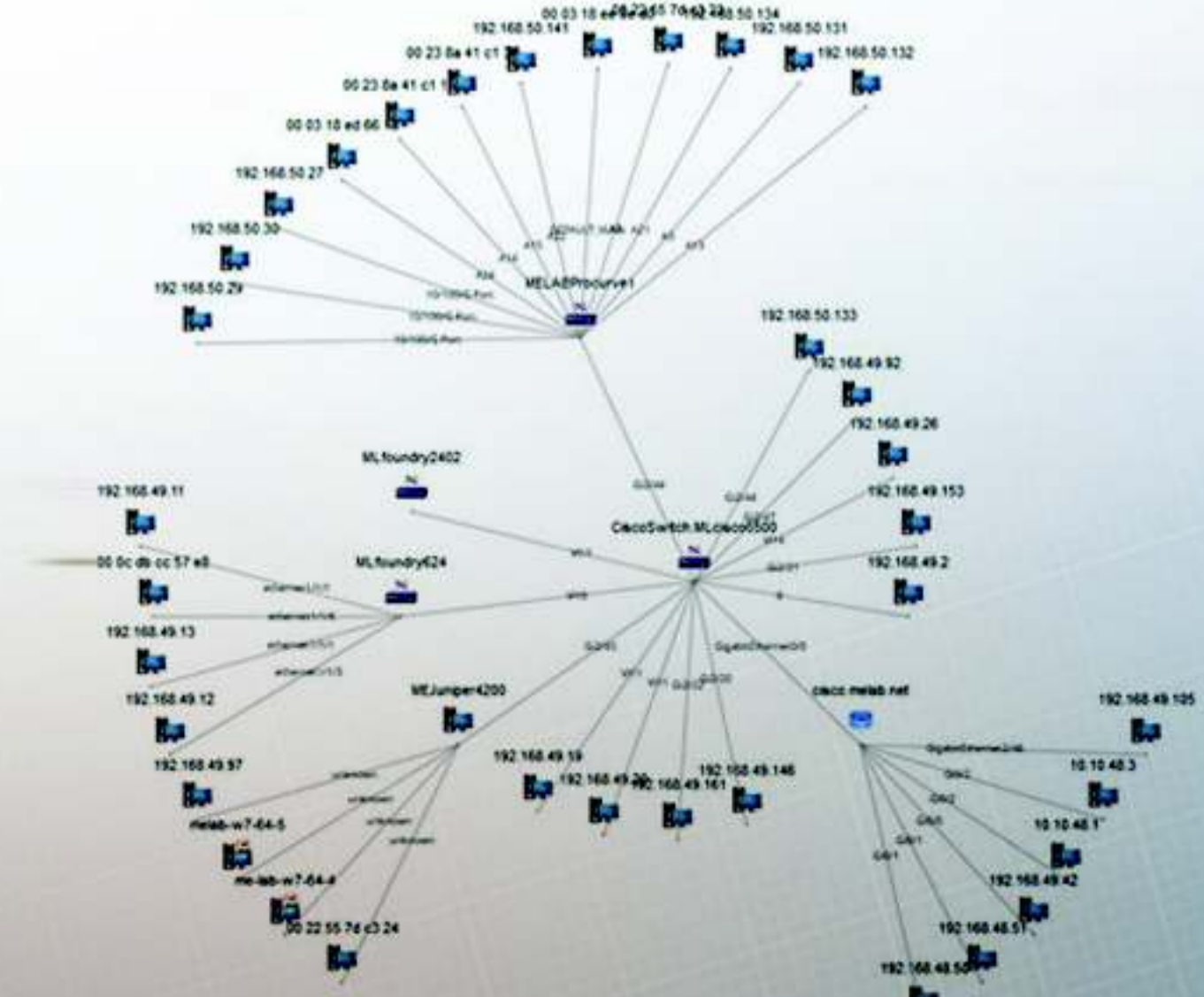


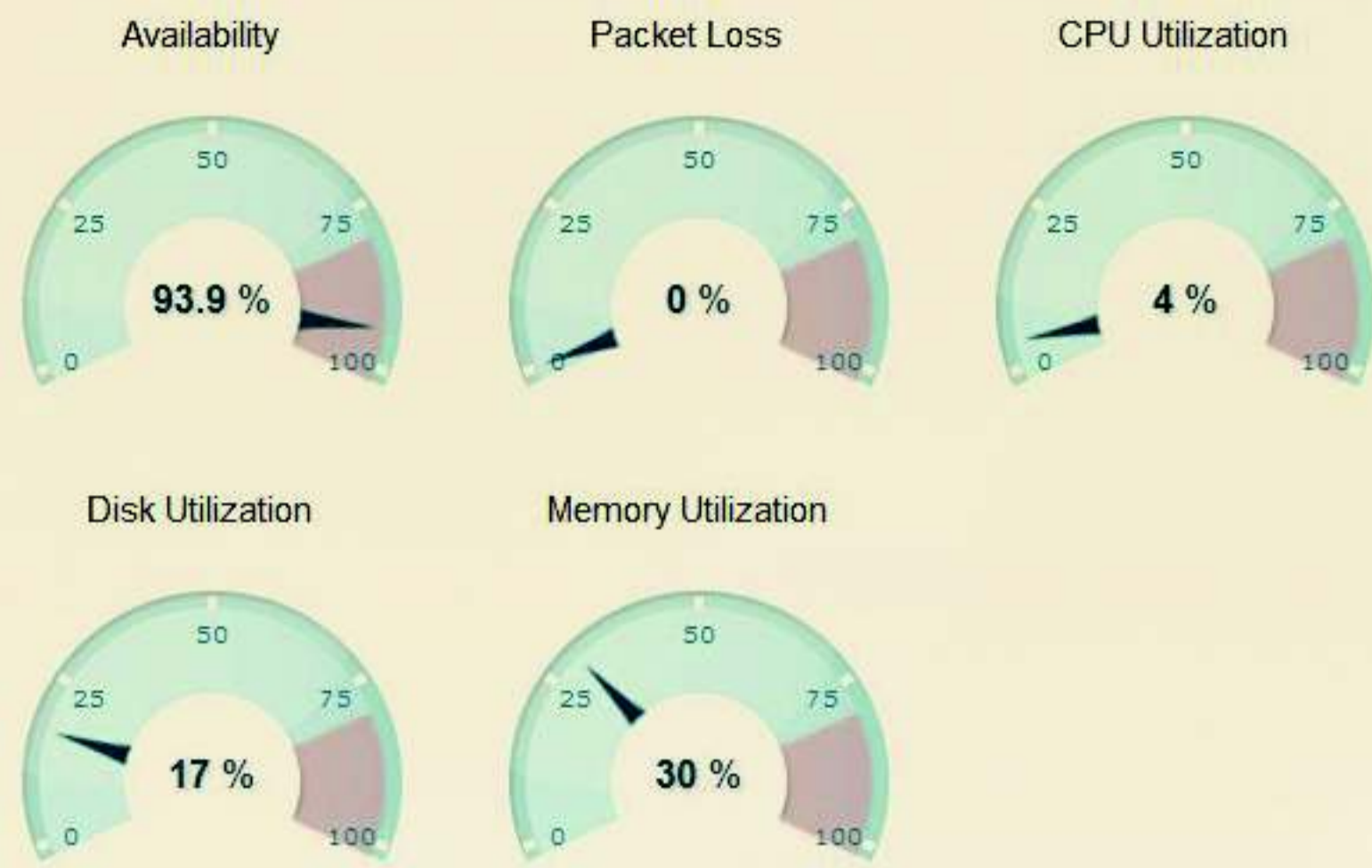
Flow-based Network Traffic Analysis

- Gain in-depth information on network traffic leveraging NetFlow, SFlow, JFlow etc
- Identify top bandwidth consumers by user/application/device
- Make important capacity planning decisions aided by months of traffic trends
- Have your own bandwidth billing system

Network Mapping

- Automatically discover & visualize your entire IT infrastructure
- Pinpoint network outages and performance degradations; quickly drill down to the problematic device
- Periodically discover the network to keep the map up-to-date





Server Performance Monitoring

- Monitor Servers across multiple OSes leveraging SNMP, WMI & CLI
- Monitor VMware, Hyper-V and Citrix XenServer Host and VMs
- Monitor Services, Windows Services, Processes, Custom scripts, URLs (HTTP/HTTPS), Files/Folders

Applications Monitoring

- Automatic application discovery & performance management
- Gain visibility into your applications behavior
- Monitor end-user experience



Active Alarms (110)

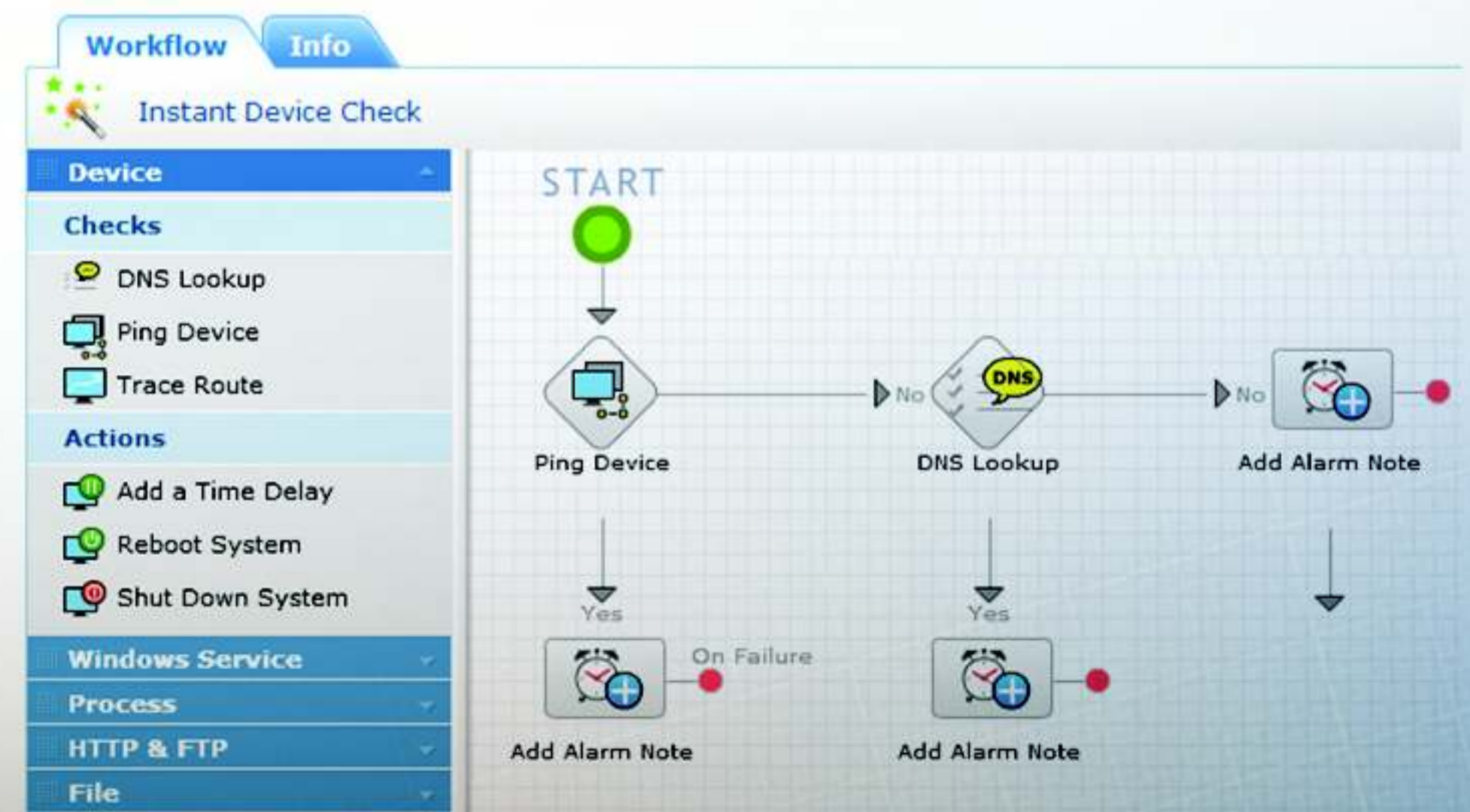
Alarms	Message	Source	Category	Technician	Severity	Modified Time
All Alarms (158)	1 Device not responding. Probably down or busy	W2k-Server-4	Server	demoadmin	Attention	2011/12/13 10:39:53 PM PST
Active Alarms (110)	Availability threshold limit violated (< 100%). 100 % of requests sent from cisco2800Router failed to reach 203.199.211.77. Command Output?	cisco2800Router	Router	sadmin	Critical	2011/12/12 07:10:46 PM PST
Event Log Alarms (6)	Command Error Line matching interface SourceDataLine supporting format PCM_UNSIGNED 11025.0 Hz, 8 bit, mono, 1 bytes/frame, not supported	cisco2800Router	Router	demoadmin	Critical	2011/12/12 07:10:38 PM PST
SysLog Alarms (1)	Availability threshold limit violated (< 100%). 100 % of requests sent from cisco2800Router failed to reach 203.199.211.77. Command Output?	cisco2800Router	Router	Unassigned	Critical	2011/12/12 07:06:08 PM PST
	Command Error Line matching interface SourceDataLine supporting format PCM_UNSIGNED 11025.0 Hz, 8 bit, mono, 1 bytes/frame, not supported	ESX-2	VirtualDevice	demoadmin	Critical	2011/12/12 06:44:11 PM PST
	Disk Free Space of opm_lab_ds_12 is 3.22 GB. threshold value is 5 GB	ESX-2	VirtualDevice	Unassigned	Critical	2011/12/12 06:44:11 PM PST
	Disk Free Space of opm_lab_ds_11 is 4.97 GB. threshold value is 5 GB	ESX-2	VirtualDevice	Unassigned	Critical	2011/12/12 06:44:11 PM PST
	Disk Free Space of opm_lab_temp is 1.47 GB. threshold value is 5 GB	ESX-2	VirtualDevice	Unassigned	Critical	2011/12/12 06:44:11 PM PST
	LOG Files Used Percentage is 88 %. threshold value for this monitor is 75 %	DB-Server	Server	operator	Critical	2011/12/12 05:31:04 PM PST
	Instance CountResponse timed out after 10 seconds	Exch10-Server	Server	demoadmin	Service Down	2011/12/12 05:22:33 PM PST
	Probable device failure: No response from device for last 3 polls	W2K8-Server-4	Server	Unassigned	Trouble	2011/12/12 03:52:02 PM PST
	Probable device failure: No response from device for last 3 polls	ITS-Server	Server	Unassigned	Trouble	2011/12/12 02:39:12 PM PST
	Probable device failure: No response from device for last 3 polls	cisco2800Router	Router	operator	Trouble	2011/12/12 02:36:18 PM PST
	Device not responding. Probably down or busy	LoadBalancer	LoadBalancer	demoadmin	Attention	2011/12/12 02:26:59 PM PST

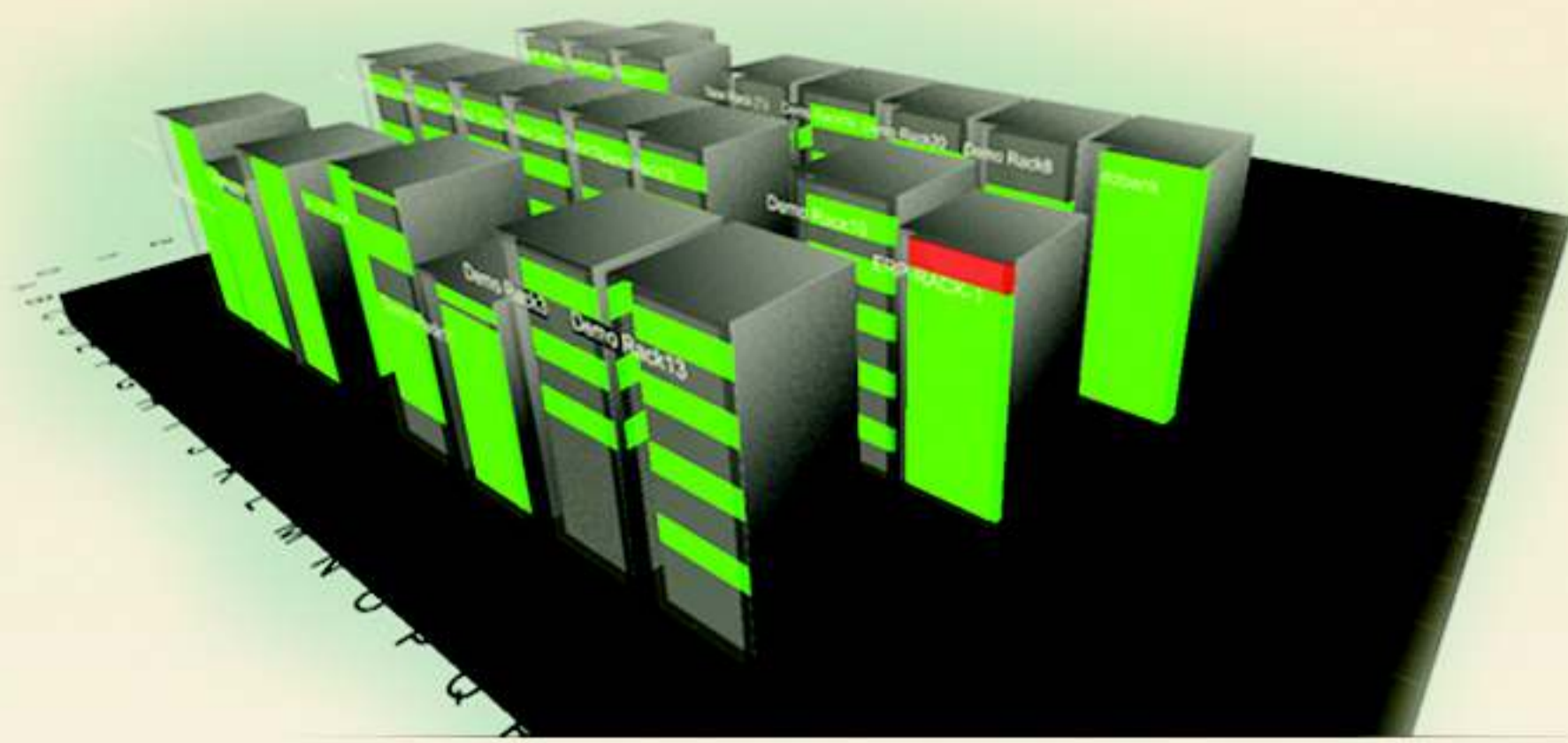
Fault Management

- Spot network, server & application faults proactively via multi-level thresholds
- Get alerted through email & SMS
- Receive alerts for Windows event log, syslog and SNMP trap
- Automatically trigger self-healing scripts

IT Workflow Automation

- Automate L1/L2 and repetitive IT tasks with code-free IT workflow automation
- Record the IT workflow procedures as an XML
- Automatically trigger workflows to remediate faults



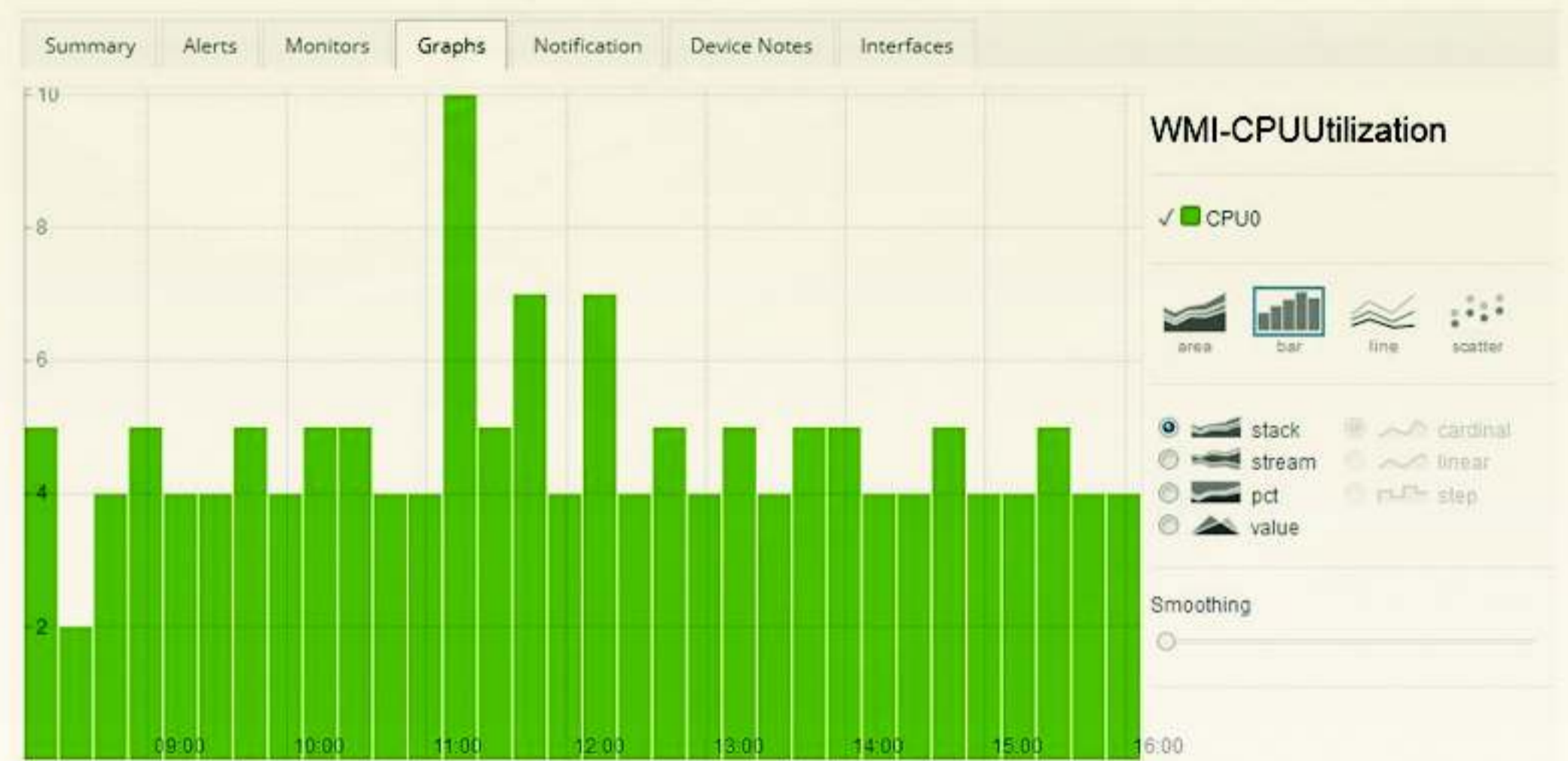


3D Datacenter Builder

- Create a virtual representation of your datacenter floors and racks
- View the health status of devices in each rack in live
- Embed the 3D view in NOC screens and monitor them 24x7
- Unique QR Codes to identify devices on the floor

Intuitive network performance Reports

- Powerful & Customizable reports to cater to your monitoring needs
- Share reports periodically using schedule Email reports; supports XLS, PDF and HTML formats.



Server down			
By administrator on Sep 24, 2013 04:32 AM		Due Date : N/A	
Request		Tasks (0) Resolution History	
Description			
The remote server machine does not exist or is unavailable			
Request Details			
Service Category	Not Assigned	Status	Open
Mode	Not Assigned	Priority	Not Assigned
Level	Not Assigned	Group	Not Assigned
Technician	Hosting tech1	Site	New York
Category	Network	Subcategory	Not Assigned
Item	Not Assigned	Asset	-
Created By	Demo	Department	Not Assigned
SLA	Not Assigned	Template	Default Request
Created Date	Sep 24, 2013 04:32 AM	DueBy Date	-
Response DueBy Time	-	Last Update Time	Not Assigned
Requester Details			
Requester Name	administrator	E-mail Address	-
Contact number	1234455	Mobile number	1234567890
Department	-	Business Impact	-

Integration with other products

- Integrates with other ManageEngine products such as NetFlow Analyzer, Firewall Analyzer, Applications Manager, ServiceDesk Plus, DeviceExpert etc
- Offers REST APIs for integration with third party tools

TRUSTED BY



Contact us : www.opmanager.com ● opmanager-support@manageengine.com ● +1 888 720 9500

TRY 30-DAY FREE TRIAL